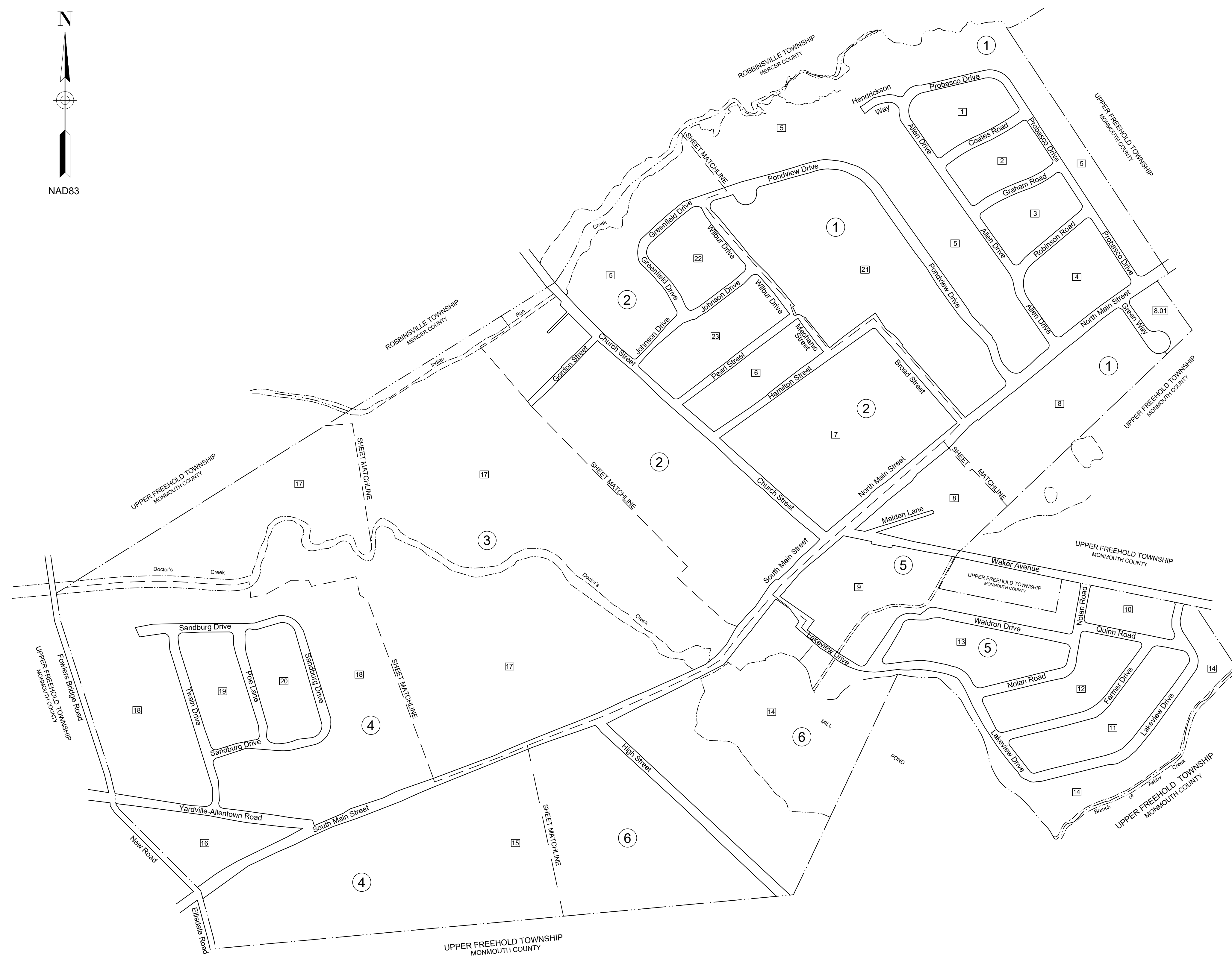
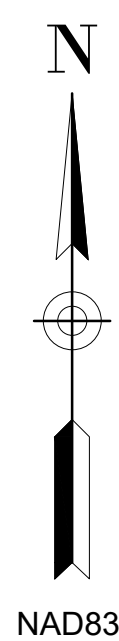


TAX MAPS

**BOROUGH OF
ALLENTOWN**

Monmouth County, New Jersey

KEY MAP



LEGEND


KEY MAP

SHEET NUMBER	①
BLOCK NUMBER	⑧
SHEET LIMIT	---
BLOCK LIMIT	---
COUNTY LINE	---
MUNICIPAL BORDER	---
STREETS AND ROADS	---
STREAMS AND WATER LINES	---

DETAIL SHEETS

BLOCK NUMBER	⑧
LOT NUMBER	1.03
CALCULATED DISTANCE	200'(C)
DEED DISTANCE	200'(D)
ACREAGE	7.56 AC
ROAD WIDTHS	50'
COUNTY LINE	---
MUNICIPAL BOUNDARY	---
ROADS	---
BLOCK LIMIT	---
STREAMS AND WATER LINES	---
WATER PROPERTY LINE	P/L
PROPERTY LINE	---
EASEMENT LINE	---
FLOOD HAZARD AREA	F.H.A.

I HEREBY CERTIFY THAT THIS MAP AND THE SURVEY HAS BEEN REVISED UNDER MY IMMEDIATE SUPERVISION, AND COMPLIES WITH THE LAWS OF THE STATE OF NEW JERSEY.

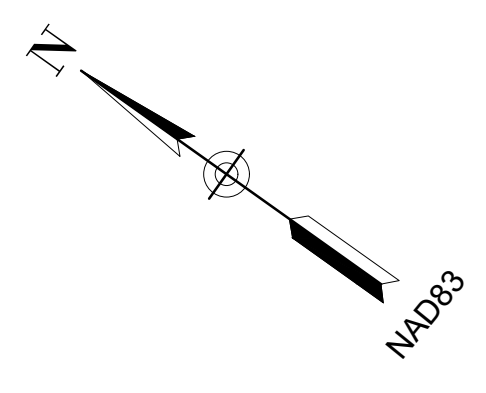

 TED W. PIVOVARNICCK, NJLPS LIC. NO. 35868

THE AREAS, BOUNDARIES AND DIMENSIONS SHOWN ON THIS TAX MAP, ARE DERIVED FROM GROUND SURVEYS, AERIAL SURVEYS, AND RECORDED PLANS, MAPS, DEEDS, WILLS, AND ARE TO BE USED FOR ASSESSMENT PURPOSES ONLY.

REVISIONS		
DATE	NAME	LIC. NO.
12/31/17	TED W. PIVOVARNICCK	NJPLS 35868
12/31/18	TED W. PIVOVARNICCK	NJPLS 35868
12/31/19	TED W. PIVOVARNICCK	NJPLS 35868
12/31/20	TED W. PIVOVARNICCK	NJPLS 35868
12/31/21	TED W. PIVOVARNICCK	NJPLS 35868

TAX MAP
 BOROUGH OF ALLENTOWN
 MONMOUTH COUNTY, NEW JERSEY
 SCALE: 1"=300' December, 2016
TED W. PIVOVARNICCK, NJPLS
 ROBERTS ENGINEERING GROUP, LLC.
 1670 WHITEHORSE HAM. SQUARE RD.
 HAMILTON, NJ
 TO SHOW CONDITIONS AS OF DECEMBER 2016

KEY MAP



ROBBINSVILLE TOWNSHIP
MERCER COUNTY

UPPER FREEHOLD TOWNSHIP
MONMOUTH COUNTY

UPPER FREEHOLD TOWNSHIP
MONMOUTH COUNTY



SHEET 2

SHEET 2

SHEET 2

SHEET 2

SHEET 5

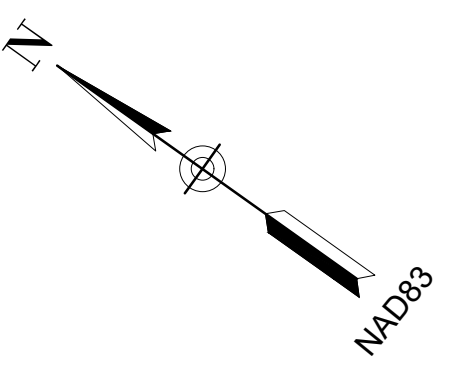
THE AREAS, BOUNDARIES AND DIMENSIONS SHOWN ON THIS TAX MAP, ARE DERIVED FROM GROUND SURVEYS, AERIAL SURVEYS, AND RECORDED PLANS, MAPS, DEEDS, WILLS, AND ARE TO BE USED FOR ASSESSMENT PURPOSES ONLY.

I HEREBY CERTIFY THAT THIS MAP AND THE SURVEY HAS BEEN REVISED UNDER MY IMMEDIATE SUPERVISION, AND COMPLIES WITH THE LAWS OF THE STATE OF NEW JERSEY.

Ted W. Pivovarnick
TED W. PIVOVARNIC, NJPLS LIC. NO. 35868

TAX MAP
BOROUGH OF ALLENTOWN
MONMOUTH COUNTY, NEW JERSEY
SCALE: 1"=100' DECEMBER, 2016
TED W. PIVOVARNIC, NJPLS
ROBERTS ENGINEERING GROUP, LLC.
1670 WHITEHORSE HAM. SQUARE RD.
HAMILTON, NJ
TO SHOW CONDITIONS AS OF DECEMBER 2016

REVISIONS		
DATE	NAME	LIC. NO.
12/31/17	TED W. PIVOVARNICCK	NJPLS 35868
12/31/18	TED W. PIVOVARNICCK	NJPLS 35868
12/31/19	TED W. PIVOVARNICCK	NJPLS 35868
12/31/20	TED W. PIVOVARNICCK	NJPLS 35868
12/31/21	TED W. PIVOVARNICCK	NJPLS 35868



ROBBINSVILLE TOWNSHIP
MERCER COUNTY



THE AREAS, BOUNDARIES AND DIMENSIONS SHOWN ON THIS TAX MAP, ARE DERIVED FROM GROUND SURVEYS, AERIAL SURVEYS, AND RECORDED PLANS, MAPS, DEEDS, WILLS, AND ARE TO BE USED FOR ASSESSMENT PURPOSES ONLY.

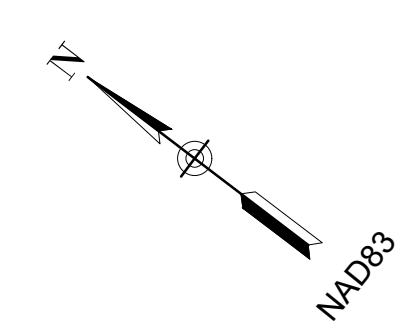
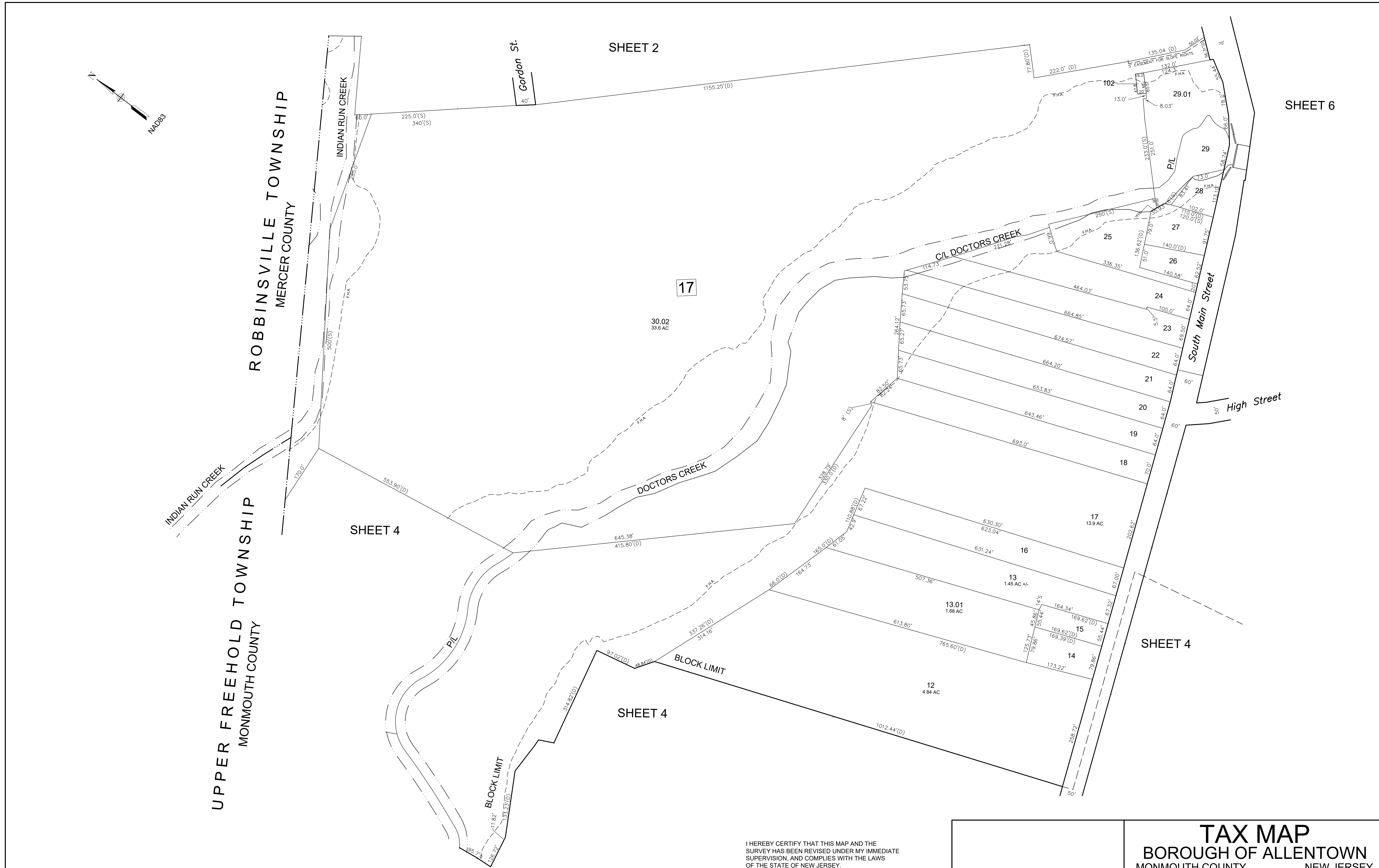
I HEREBY CERTIFY THAT THIS MAP AND THE SURVEY HAS BEEN REVISED UNDER MY IMMEDIATE SUPERVISION, AND COMPLIES WITH THE LAWS OF THE STATE OF NEW JERSEY.

Ted W. Pivovarnick

TED W. PIVOVARNIC, NJPLS LIC. NO. 35868

REVISIONS		
DATE	NAME	LIC. NO.
12/31/17	TED W. PIVOVARNICCK	NJPLS 35868
12/31/18	TED W. PIVOVARNICCK	NJPLS 35868
12/31/19	TED W. PIVOVARNICCK	NJPLS 35868
12/31/20	TED W. PIVOVARNICCK	NJPLS 35868
12/31/21	TED W. PIVOVARNICCK	NJPLS 35868

TAX MAP
BOROUGH OF ALLENTOWN
 MONMOUTH COUNTY, NEW JERSEY
 SCALE: 1"=100'
 DECEMBER, 2016
TED W. PIVOVARNIC, NJPLS
 ROBERTS ENGINEERING GROUP, LLC.
 1670 WHITEHORSE HAM. SQUARE RD.
 HAMILTON, NJ
 TO SHOW CONDITIONS AS OF DECEMBER 2016



REVISIONS		
DATE	NAME	LIC. NO.
12/31/17	TED W. PIVOARNICCK	NJPLS 35868
12/31/18	TED W. PIVOARNICCK	NJPLS 35868
12/31/19	TED W. PIVOARNICCK	NJPLS 35868
12/31/20	TED W. PIVOARNICCK	NJPLS 35868
12/31/21	TED W. PIVOARNICCK	NJPLS 35868

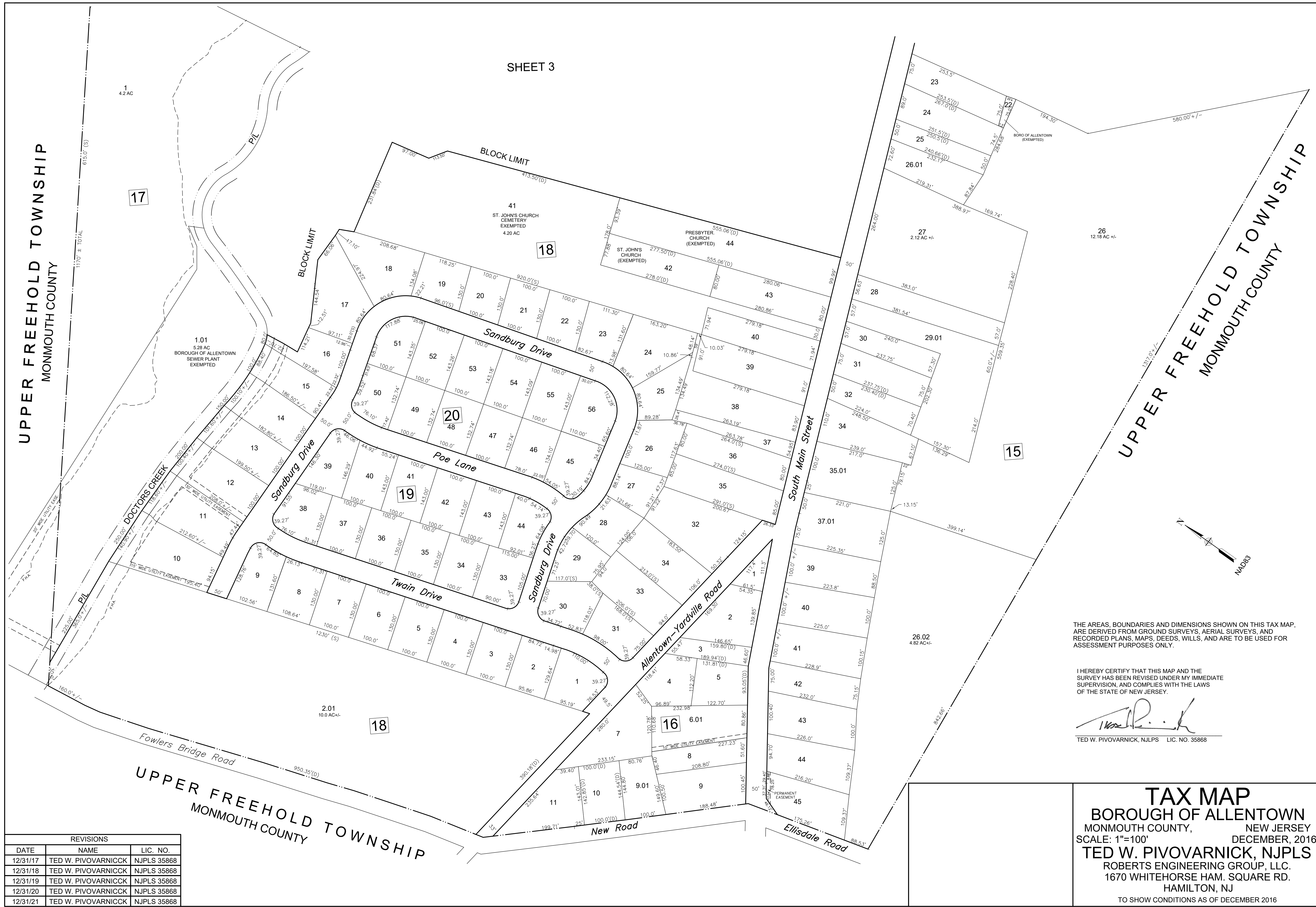
THE AREAS, BOUNDARIES AND DIMENSIONS SHOWN ON THIS TAX MAP, ARE DERIVED FROM GROUND SURVEYS, AERIAL SURVEYS, AND RECORDED PLANS, MAPS, DEEDS, WILLS, AND ARE TO BE USED FOR ASSESSMENT PURPOSES ONLY.

I HEREBY CERTIFY THAT THIS MAP AND THE SURVEY HAS BEEN REVISED UNDER MY IMMEDIATE SUPERVISION, AND COMPLIES WITH THE LAWS OF THE STATE OF NEW JERSEY.

Ted W. Pivovarnick
 TED W. PIVOARNICCK, NJPLS LIC. NO. 35868

TAX MAP
BOROUGH OF ALLENTOWN
 MONMOUTH COUNTY, NEW JERSEY
 SCALE: 1"=100' DECEMBER, 2016
TED W. PIVOARNICK, NJPLS
 ROBERTS ENGINEERING GROUP, LLC.
 1670 WHITEHORSE HAM. SQUARE RD.
 HAMILTON, NJ
 TO SHOW CONDITIONS AS OF DECEMBER 2016

SHEET 3



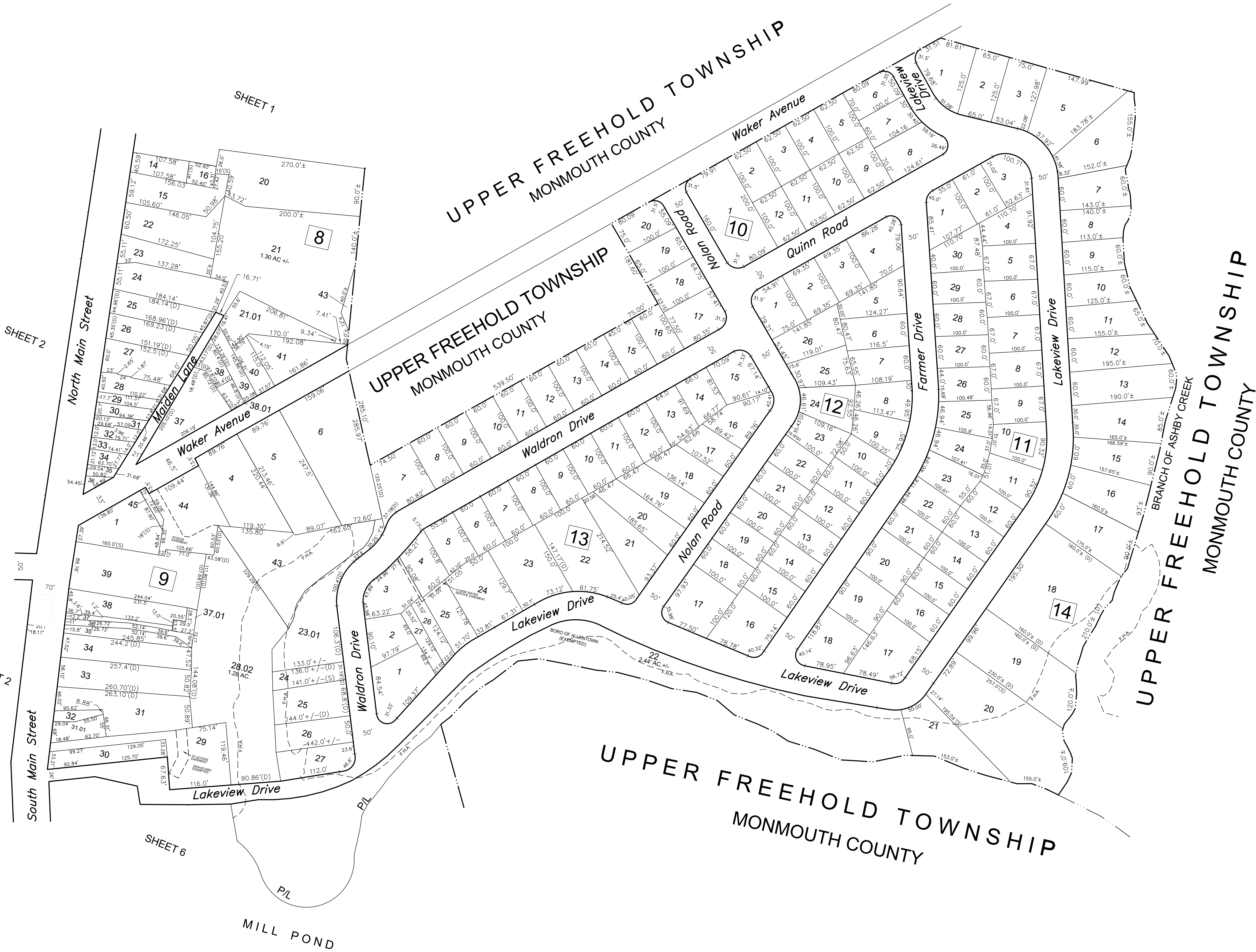
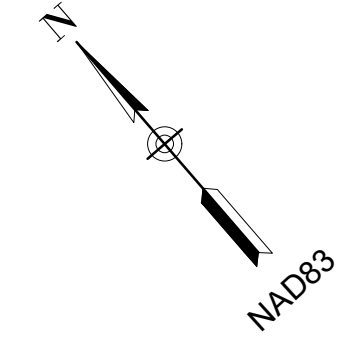
THE AREAS, BOUNDARIES AND DIMENSIONS SHOWN ON THIS TAX MAP, ARE DERIVED FROM GROUND SURVEYS, AERIAL SURVEYS, AND RECORDED PLANS, MAPS, DEEDS, WILLS, AND ARE TO BE USED FOR ASSESSMENT PURPOSES ONLY.

I HEREBY CERTIFY THAT THIS MAP AND THE SURVEY HAS BEEN REVISED UNDER MY IMMEDIATE SUPERVISION, AND COMPLIES WITH THE LAWS OF THE STATE OF NEW JERSEY.

Ted W. Pivovarnick
 TED W. PIVOVARNICK, NJPLS LIC. NO. 35868

TAX MAP
 BOROUGH OF ALLENTOWN
 MONMOUTH COUNTY, NEW JERSEY
 SCALE: 1"=100' DECEMBER, 2016
TED W. PIVOVARNICK, NJPLS
 ROBERTS ENGINEERING GROUP, LLC.
 1670 WHITEHORSE HAM. SQUARE RD.
 HAMILTON, NJ
 TO SHOW CONDITIONS AS OF DECEMBER 2016


REVISIONS		
DATE	NAME	LIC. NO.
12/31/17	TED W. PIVOVARNICK	NJPLS 35868
12/31/18	TED W. PIVOVARNICK	NJPLS 35868
12/31/19	TED W. PIVOVARNICK	NJPLS 35868
12/31/20	TED W. PIVOVARNICK	NJPLS 35868
12/31/21	TED W. PIVOVARNICK	NJPLS 35868



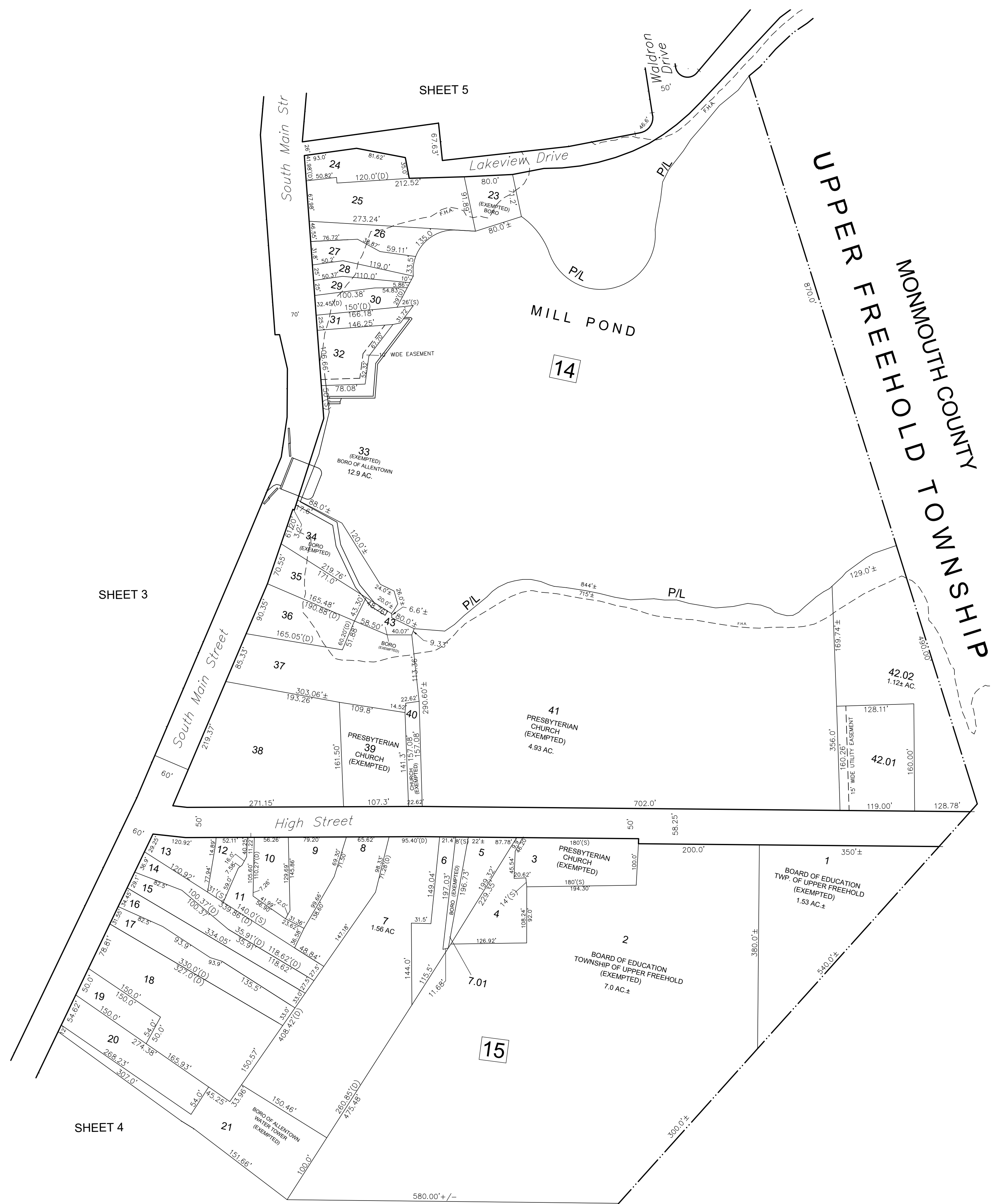
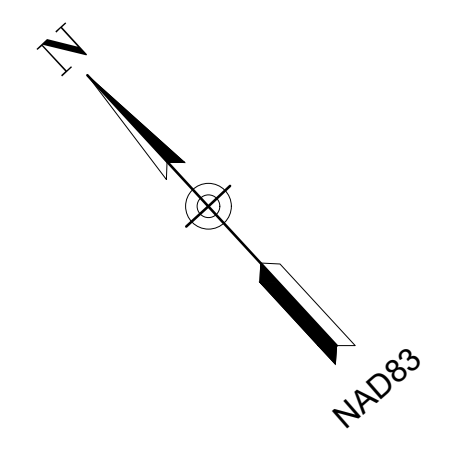
REVISIONS		
DATE	NAME	LIC. NO.
12/31/17	TED W. PIVOARNICCK	NJPLS 35868
12/31/18	TED W. PIVOARNICCK	NJPLS 35868
12/31/19	TED W. PIVOARNICCK	NJPLS 35868
12/31/20	TED W. PIVOARNICCK	NJPLS 35868
12/31/21	TED W. PIVOARNICCK	NJPLS 35868

THE AREAS, BOUNDARIES AND DIMENSIONS SHOWN ON THIS TAX MAP, ARE DERIVED FROM GROUND SURVEYS, AERIAL SURVEYS, AND RECORDED PLANS, MAPS, DEEDS, WILLS, AND ARE TO BE USED FOR ASSESSMENT PURPOSES ONLY.

I HEREBY CERTIFY THAT THIS MAP AND THE SURVEY HAS BEEN REVISED UNDER MY IMMEDIATE SUPERVISION, AND COMPLIES WITH THE LAWS OF THE STATE OF NEW JERSEY.


 TED W. PIVOARNICCK, NJPLS LIC. NO. 35868

TAX MAP
 BOROUGH OF ALLENTOWN
 MONMOUTH COUNTY, NEW JERSEY
 SCALE: 1"=100' DECEMBER, 2020
TED W. PIVOARNICK, NJPLS
 ROBERTS ENGINEERING GROUP, LLC.
 1670 WHITEHORSE HAM. SQUARE RD.
 HAMILTON, NJ
 TO SHOW CONDITIONS AS OF DECEMBER 2020



THE AREAS, BOUNDARIES AND DIMENSIONS SHOWN ON THIS TAX MAP, ARE DERIVED FROM GROUND SURVEYS, AERIAL SURVEYS, AND RECORDED PLANS, MAPS, DEEDS, WILLS, AND ARE TO BE USED FOR ASSESSMENT PURPOSES ONLY.

I HEREBY CERTIFY THAT THIS MAP AND THE SURVEY HAS BEEN REVISED UNDER MY IMMEDIATE SUPERVISION, AND COMPLIES WITH THE LAWS OF THE STATE OF NEW JERSEY.

Ted W. Pivovarnick
TED W. PIVOVARNICK, NJPLS LIC. NO. 35868

REVISIONS		
DATE	NAME	LIC. NO.
12/31/17	TED W. PIVOVARNICK	NJPLS 35868
12/31/18	TED W. PIVOVARNICK	NJPLS 35868
12/31/19	TED W. PIVOVARNICK	NJPLS 35868
12/31/20	TED W. PIVOVARNICK	NJPLS 35868
12/31/21	TED W. PIVOVARNICK	NJPLS 35868

TAX MAP
BOROUGH OF ALLENTOWN
 MONMOUTH COUNTY, NEW JERSEY
 SCALE: 1"=100' DECEMBER, 2020
TED W. PIVOVARNICK, NJPLS
 ROBERTS ENGINEERING GROUP, LLC.
 1670 WHITEHORSE HAM. SQUARE RD.
 HAMILTON, NJ
 TO SHOW CONDITIONS AS OF DECEMBER 2020