



# Borough of Allentown, Monmouth County, NJ

Is your property within  
The Historic District?

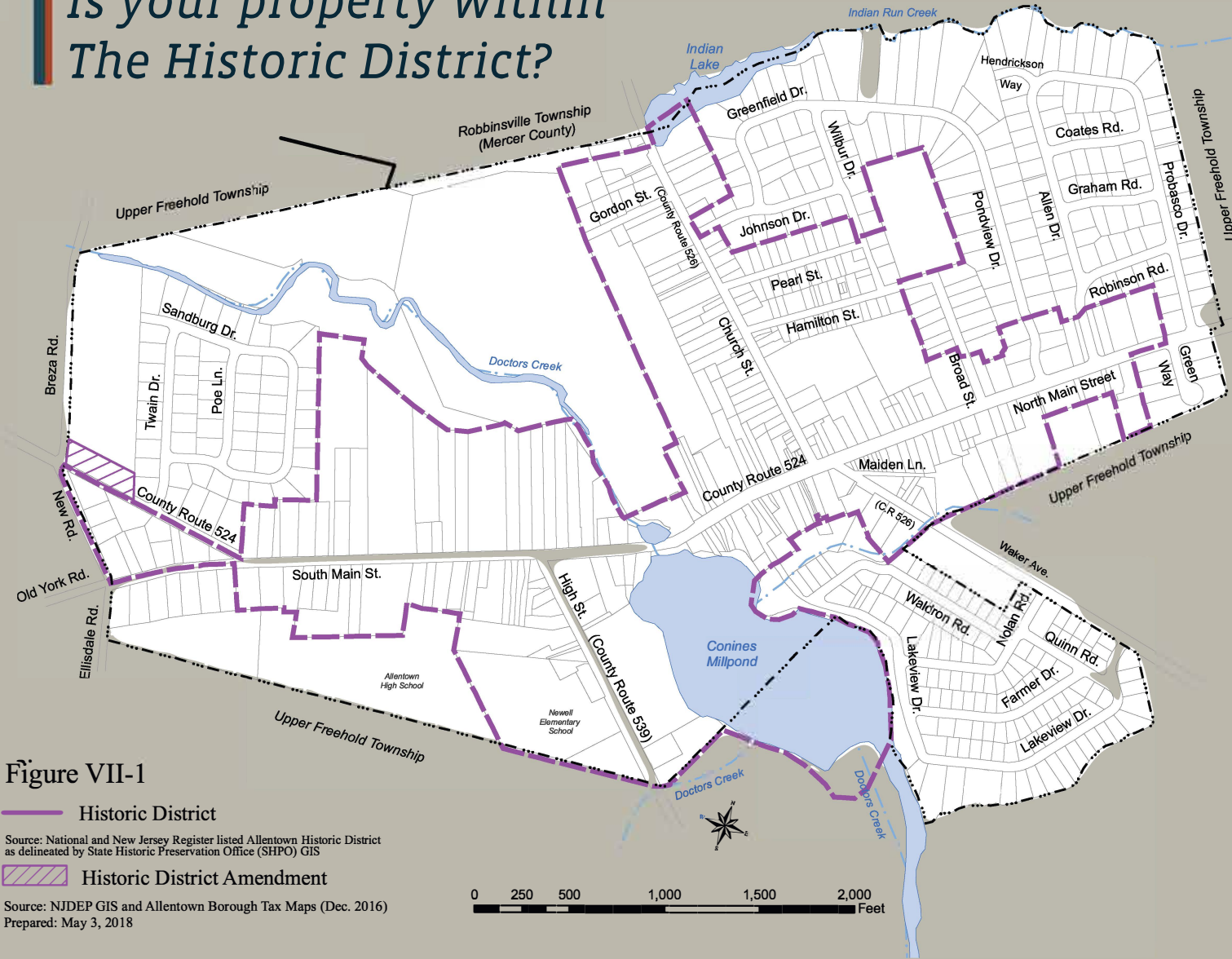


Figure VII-1

— Historic District

Source: National and New Jersey Register listed Allentown Historic District as delineated by State Historic Preservation Office (SHPO) GIS

▨ Historic District Amendment

Source: NJDEP GIS and Allentown Borough Tax Maps (Dec. 2016)  
Prepared: May 3, 2018



# ALLENTOWN BOROUGH

EST. 1706



What you need to know

## Historic District

The properties that contribute to the Historic District are located within the purple boundary in the map above.

## HISTORIC PRESERVATION COMMISSION (HPC)

The Allentown HPC is the part of the local governing structure that is generally responsible for maintaining the historical character of the Historic District. It is a commission of volunteers knowledgeable about historic preservation. It operates in accordance with the Allentown HPC Ordinance.

### [Ordinance 03-2021 Becoming a Historic Commission](#)

## ALLENTOWN'S HISTORIC DISTRICT

- Creates a sense of community identity and village history.
- Preserves the historic character and beauty of the past.
- Celebrates our architectural heritage.
- Attracts visitors and supports the business community.
- Stabilizes property values, economic development and sustainability.

## PROPERTY OWNERS AND THE HPC

As a residential or commercial property owner in the Allentown Historic District, you and the Historic Preservation Commission have a mutual interest: preserving the value of your historic property within the district. Over time, you may consider making changes to the exterior of your historic property or grounds. This brochure explains how working with the HPC is necessary and can help you make such changes.

## GETTING STARTED

When considering renovating, rehabilitating, restoring or reconstructing the exterior of your property contact the Borough Administrator to get information on how to proceed. [Clerk@AllentownBoroNJ.com](mailto:Clerk@AllentownBoroNJ.com)

## WORKING WITH THE HPC

- When considering a change to the exterior of your house, building or property, the HPC Chair can be contacted for a preliminary discussion and the HPC Design Guidelines should be consulted. [Design Guidelines](#)
- Changes needing to be brought to the HPC include **all signage, all building additions, alterations, fences, roofs windows, doors, porches and new buildings.** Emergency repairs need not wait for HPC approval but must be approved by the Allentown Construction Officer.
- When deciding to make a change you will need to submit to the Borough Administrator an "Application for Historic Preservation" form, including a description of the proposed change and a drawing of the change. The application will then be forwarded to the HPC. [Historic Preservation Review Commission Application](#)
- With a major change, you will be encouraged to attend an HPC meeting during which you would present your application. The HPC might make suggestions and recommendations for your planned change.
- Your application must be approved by the HPC in order for you to proceed with the proposed change.

## RESOURCES

The following resources are helpful in answering general questions about making changes to the exterior of property in the Allentown Historic District:

- **Borough Administrator /Municipal Clerk:**  
8 North Main Street, Allentown NJ 08501  
609.259.3151  
[Clerk@AllentownBoroNJ.com](mailto:Clerk@AllentownBoroNJ.com)
- **The Allentown Borough website** <https://allentownboronj.com> includes a "Commissions" link to The HPC section
- **The following is included in the HPC section:**
  - [Historic District Map](#)
  - [Historic Preservation Review Commission Application](#)
  - [Design Guidelines](#)
  - [Ordinance 03-2021 Becoming a Historic Commission](#) pp. 134 – Detailed steps to be taken by property owners.

Obtain this information and more by scanning the QR Code on the title page of this brochure.

HPC guidelines and procedures must be followed. Making changes to the exterior of your property that do not follow HPC guidelines and procedures may result in a penalty.

